

Ornament Box Tutorial

By Laura Miller

Supplies Needed:

pattern

paper glue, paper scissors

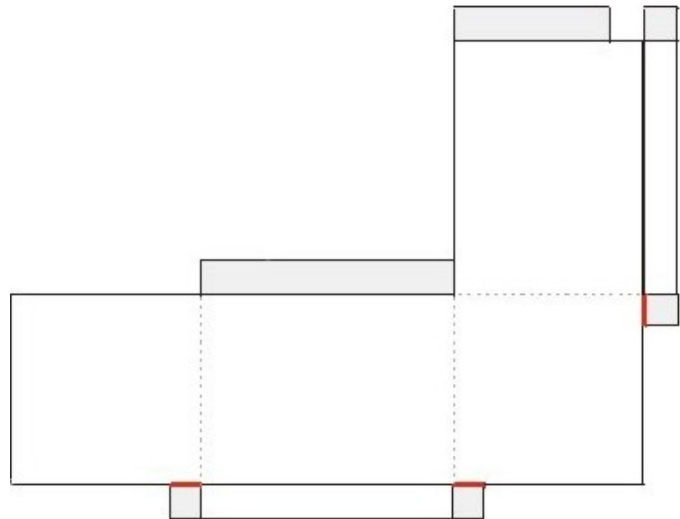
Print out the box pattern on cardstock. Most printers print OK on 67 lb cover. I also print on 80 lb cover, but my printer has a lever on it to open the paper path and a setting for heavier paper.

Print the paper printies on regular paper or on photo paper and have it copied onto regular paper. Spray with a clear satin, gloss or matte sealer.

Print the background picture on photo paper, and when dry spray with a clear satin, gloss or matte sealer.

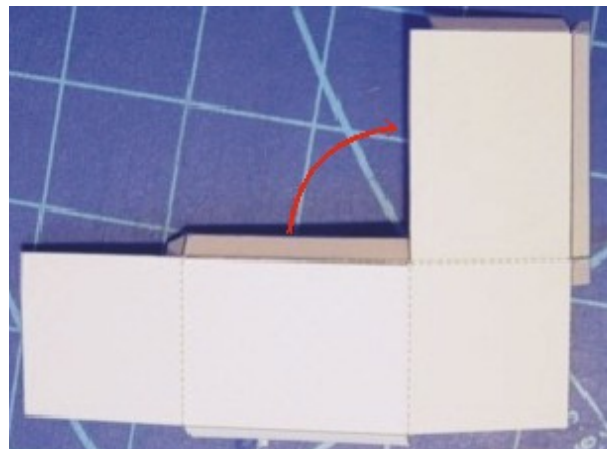
1. Cut out the pattern on all the outside lines.

2. Cut the tabs so they will fold. See the picture to the right. Cut on the red lines.

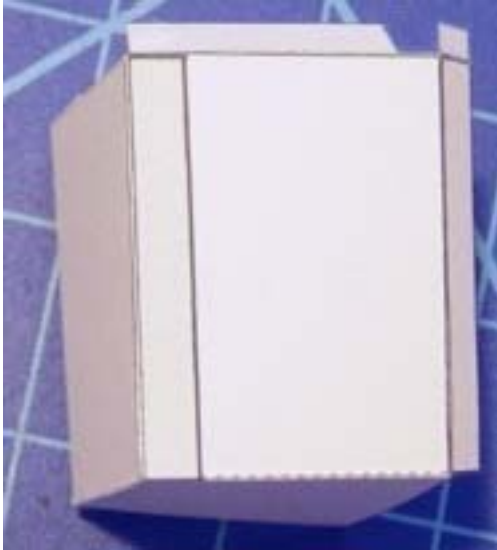


3. Score all lines and mountain fold. (That means all lines are folded so that the unprinted side of the cardstock is folded together.) The tab glues to the outside (printed side) of the box.

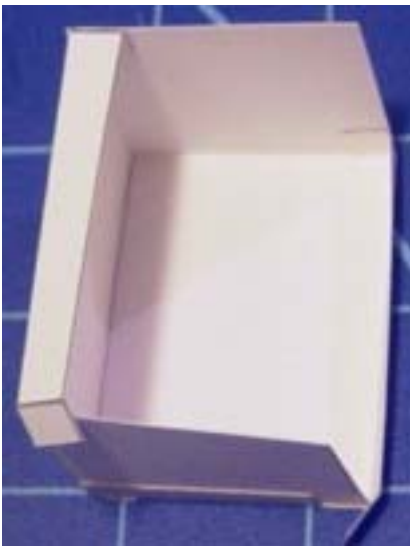
You can see the folds from the picture.



4. Your 1st flap to glue will be the one that attaches the two upright walls together. See the red arrow on the picture above and the glued box in the picture on the left on the next page.

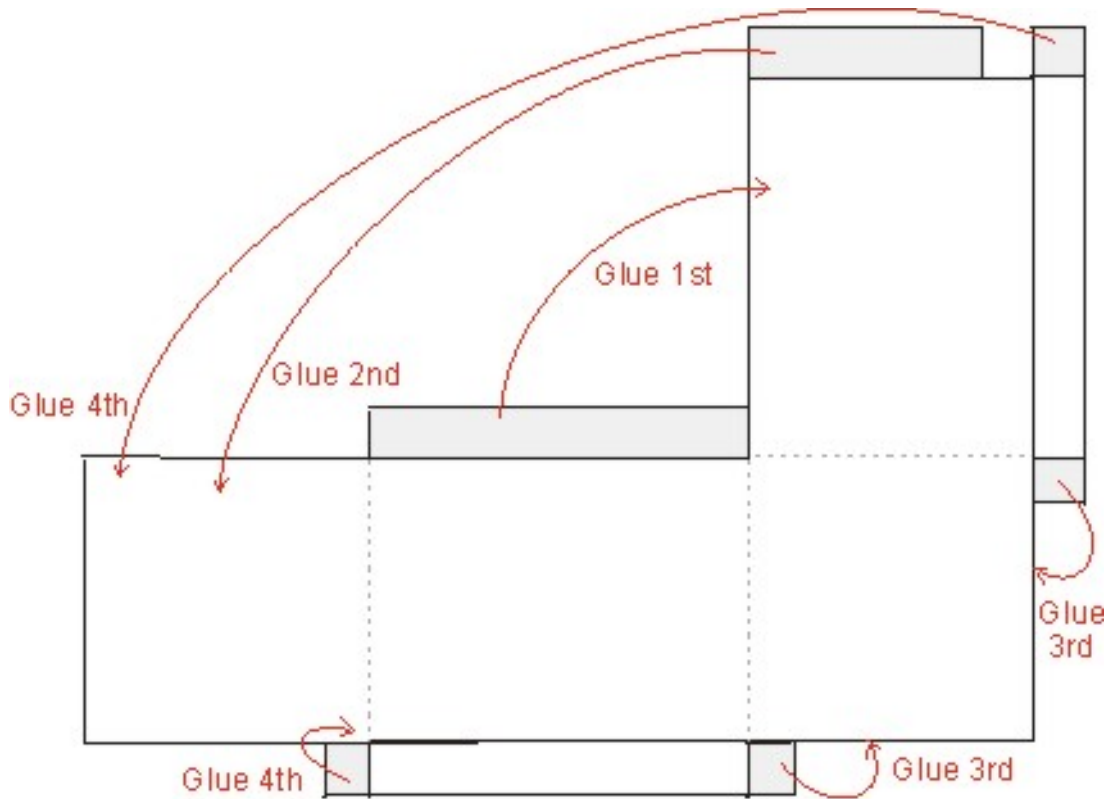


5. Your 2nd flap to glue is the flap that attaches the upright wall to the bottom of the box. See the picture above and to the right.
6. Your third flaps to glue are the two flaps at the bottom of the two side edges. You will glue them inside to the bottom of the box. The box is upside down in the picture below left so you can see how the tabs are glued. These flaps will be covered up with the extra bottom piece.



7. Your 4th and final flaps to glue are the two little flaps that attach the tops of the side edges to the top of the box. You will glue those to the outside of the top. See the picture above right. These flaps will be covered up by the cover of the box.

The diagram below shows the order of gluing for each flap. Remember that the printed side will be the outside of the box.



For the box cover, score and fold so that the printed side is the outside. I glue the flaps glue to the inside of the box, but you could glue them to the outside if you prefer so that they will be covered by the wrapping paper. With a sharp object, make a hole in the center of the box for the string to go through.